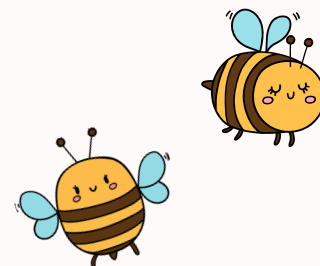




Malvern Springs  
PRIMARY SCHOOL



# TERM 2

28 APRIL - 4 JULY 2025

WEEK	MONDAY	TUESDAY	WEDNESDAY	THURSDAY	FRIDAY
<b>1</b>	28 STAFF DEVELOPMENT DAY	29 STUDENTS COMMENCE	30 Year 6 Camp	1 MAY Year 6 Camp	2 Year 6 Camp
<b>2</b>	5	6 Mother's Day Stall Year 2 History Excursion	7	8 Mother's Day Stall	9
<b>3</b>	12 Yr6 Election Commission Incursion P&C Meeting	13	14 Numero Incursion	15 Year 1 Bee Incursion	16 Yr 4-6 Assembly B1 & B2
<b>4</b>	19	20 Year 3 Brownes Excursion Group 1	21 National Simultaneous Storytime	22 Year 3 Brownes Excursion Group 2	23 PP-Yr 3 Assembly E1 & E4
<b>5</b>	26	27	28 School Photos Board Meeting	29 School Photos	30 STAFF DEVELOPMENT DAY
<b>6</b>	2 JUNE WA Day	3 Yr5 Election Commission Incursion	4	5	6 P&C Crazy Hair Day
<b>7</b>	9 P&C Meeting Yr 4-6 Swimming	10 Yr 4-6 Swimming	11 Yr 4-6 Swimming	12 Yr 4-6 Swimming	13 PP-Yr 3 Assembly T5 & T11 Yr 4-6 Swimming
<b>8</b>	16 Yr 4-6 Swimming	17 Yr 4-6 Swimming	18	19	20 Yr 4-6 Assembly C3
<b>9</b>	23	24	25	26	27 Winter Carnival
<b>10</b>	30 NAIDOC WEEK	1 JULY Kindy 1&3 Mid-year Performance	2	3 Kindy 2&4 Mid-year Performance	4 Bee Day Cross Country



TERM 3 COMMENCES TUESDAY 22 JULY 2025