

MALVERN SPRINGS PRIMARY SCHOOL



ANNUAL REPORT 2023



About Our School

Our Vision

Malvern Springs Primary School is a place to **CONNECT** with each other and the community.

Staff and students are given opportunities to **ENGAGE** in quality learning and development.

All are encouraged to **FLOURISH**, grow in confidence, and reach their potential.

Malvern Springs Primary School is a school that embraces our multicultural community and fosters positive relationships. Staff work diligently to create a welcoming atmosphere where all students feel valued and included. Positive relationships are nurtured through open communication, respect and empathy. This supportive environment ensures that every child feels secure, allowing them to focus on their academic and personal growth. Preparing them not only for academic success but also for becoming compassionate and globally aware citizens.

Three school priorities

PRIORITY ONE: High standards of teaching and learning

PRIORITY TWO: Well-being for all

PRIORITY THREE: Partnerships and communication

Principles of School-wide Pedagogy

- 1. Everyone has high expectations
- 2. Effective teaching
- 3. Student and staff wellbeing
- 4. Parental and community involvement
- 5. Whole school approaches



The 2023 Annual School Report

The Annual School Report is a mandated accountability document that is provided to the Department of Education and to the school community. This report demonstrates our achievements and highlights for the 2023 school year.

Message from the Principal and School Board Chair

It is our pleasure to present to you, the community of Malvern Springs Primary School, the 2023 Annual School Report.

At Malvern Springs we are committed to making a difference for every student in every classroom, every day by providing a learning environment where children feel safe, valued, and confident to tackle academic and personal challenges.

Our school culture is inclusive of the values instilled by the Positive Behaviour program which is being revitalised and embraced by teachers, students, and the school community. Framing positive conditions for learning, high expectations of conduct and behaviour and supporting social and emotional development. This year the school invested in a Learning Support Co-ordinator and Intervention teacher to address our diverse student needs, support staff, and enhance student outcomes.

We have continued instructional coaching to ensure consistent, quality high impact teaching in every classroom.

Our Malvern Springs Primary School Board understands the school community and thank the School Board for their dedication to supporting our focus on continued improvement for all our students.

We thank the P&C president Zoe Blackstone, the P&C executive, and committee members who continue to dedicate their time and focus to improve and grow our school.

We acknowledge the families who continue to support the work of the teachers to improve outcomes for students.

Finally, thank you to the dedicated team of teachers and staff who strive each day to make a difference to the lives of the students and families in our care.

Penny Reynolds
Principal

Ian Hutchinson
School Board Chair

Message From the P & C President

A huge thanks to our Malvern Springs families, staff and children who attended events, volunteered their time, and paid their voluntary contributions. The P&C and what it contributes to the school is only as strong as the people who support it - without you none of this could happen.

Events & Fundraising

We had an extremely successful calendar of events and fundraising activities including a very successful Colour Run, a fun Trivia night, P & C disco, a pasta fundraiser and our annual Mothers and Father's Day stalls.

The funds raised have benefitted students across the school and have been used to purchase mats for the early childhood classrooms, the Funky monkey bars for the upper primary students, a 3D printer, and some Year 1 and 2 play equipment.



It has been my pleasure to work with the school and the community to achieve some great outcomes for the benefit of all students.

Zoe Blackstone

President

2023 HIGHLIGHTS

PBS - A dedicated and passionate committee re-established our Positive Behaviour Support (PBS) journey with enthusiasm. We have established our school committee, developed our whole school matrix, included student voice in the development and commenced planning our explicit lessons that will be used to teach positive behaviours.



Breakfast Club – We have some wonderful staff who volunteer two mornings a week to organise and run Breakfast club for students to enjoy a nourishing breakfast before school. We are very grateful to Mrs Ciraulo for organising donations from Woolworths, Big W, Foodbank and Coles which has enabled Breakfast club to operate.

Harmony Day- students from over 56 countries celebrated our cultural diversity and dressed in traditional cultural dress or orange in celebration of Harmony Day. Staff held a special lunch to acknowledge staff diversity. Students completed activities to celebrate our diversity and embrace the theme of 'Everyone Belonging' in our school and country, together.



Year 6 Dare Adventure Camp – The Year 6 Camp was held over three days in Dwellingup. It was a great highlight for both the students and staff who attended, engaging in activities such as kayaking, archery, raft building, zip lining and enjoying great food! Our Year 6 students showed resilience, teamwork and very good behaviour.



ANZAC Ceremony – We commemorated ANZAC day with a special outdoor ceremony. Our talented band and choir under the direction of Mrs Alison Robeson led the school tribute. Each year group laid a wreath during the service. It is wonderful to have family and community members support this occasion.



R U Ok Day R U OK? is a public health initiative to encourage people to stay connected and have conversations that can help others through difficult times in their lives. Staff and students supported R U Ok? Day by wearing something yellow to school. Our staff connected with each other with a lovely morning tea and many supportive conversations. Some classes participated in activities that promoted students engaging in conversations and asking each other meaningful questions.

NAIDOC – Mr John Mogridge from Bibbulmun Boodja performed Malvern Springs first smoking ceremony to begin NAIDOC week celebrations. A NAIDOC assembly was held and our artistic Waggyl Dreaming girls dance group performed. Our AIEO Mrs Ciraulo organised many special activities based around this year's theme 'For Our Elders' during the week to recognise the important role Elders hold in our community. Students across the school participated in a range of activities promoting cultural understanding, appreciation and responsiveness, including listening to Dreamtime stories, learning Aboriginal symbols and Noongar words, and researching bush tucker food.



Book Week- Book Week was one of the biggest events on the calendar – it was a celebration of literacy and the 2023 theme, "Read, Grow, Inspire," embodied three important words that cultivate a love for reading in children. Staff surprised students by all coming dressed as Wally from 'Where's Wally' on the first day of Book Week. This year students participated in a 'Book Swap', a dress up parade and a decorated classroom door competition.



Spelling Bee – Year 3 – 6 students participated in the Malvern Springs inaugural Spelling Bee Challenge. Students competed enthusiastically to become the year group champion and overall school champion.

Principal's Lunch – All students with 100% attendance at the end of Semester One were invited to a special lunch with the Principal. We were proud of the number of students who were able to attend.



Numero Challenge – After many hours of practice some of our dedicated middle and upper primary students participated in the Interschool Numero challenge. Malvern Springs students participated admirably.

STUDENT NUMBERS 2023

Student Numbers (as at 2023 Semester 2)

Student Number	(FTE)
----------------	-------

Primary	Kin	PPR	Y01	Y02	Y03	Y04	Y05	Y06	Total
Full Time	(40)	79	111	92	104	121	118	81	746
Part Time	79								

Note: The Kin Full Time student figure represents the Full Time Equivalent of the Part Time students

Semester 1	2020	2021	2022	2023
Primary (Excluding Kin)	729	722	718	725

There was a slight increase in student numbers from 2022 however the numbers have remained fairly stable.



ATTENDANCE 2023

The following table shows attendance compared to all WA Public Schools.

Attendance % - Primary Year Levels

	PPR	Y01	Y02	Y03	Y04	Y05	Y06
2021	92%	92%	92%	92%	91%	94%	91%
2022	87%	87%	87%	87%	88%	87%	90%
2023	88%	89%	89%	88%	89%	90%	90%
WA Public Schools 2023	88%	89%	89%	89%	89%	89%	89%

Across the state, public schools saw an increase in attendance compared to 2022. Malvern Springs attendance levels have continued to remain at level or just above WA Public Schools in all year levels.

During 2023 the school has had a focus on monitoring student attendance and has employed many strategies to target absences including our AIEO and Student services officer making home visits and daily phone calls. While students stay home when they are unwell there are students who are falling into the risk categories through staying home for other reasons. Increasingly, in-term holidays have returned in 2023 impacting on school attendance. The in-term holidays are included in the unauthorised absence figures.

Targets for 2024

- Maintain or improve the regular attendance rate
- Bridging the gap between Indigenous and non-Indigenous attendance rates

School Staff Profile



	No	FTE	AB'L
Administration Staff			
Principals	1	1.0	0
Associate / Deputy / Vice Principals	4	3.6	0
Total Administration Staff	5	4.6	0
Teaching Staff			
Level 3 Teachers	2	1.8	0
Other Teaching Staff	45	36.4	1
Total Teaching Staff	47	38.2	1
Allied Professionals			
Clerical / Administrative	5	3.6	0
Gardening / Maintenance	1	0.6	0
Instructional	1	0.8	1
Other Allied Professionals	28	21.7	1
Total Allied Professionals	35	26.7	2
Total	87	69.5	3

Malvern Springs staff collaborate effectively to enhance student outcomes. They support each other to create a cohesive and dynamic educational environment.

PHYSICAL EDUCATION

Mr Couronne and Miss Stonehouse provide a specialised Physical Education program for all students in Years PP-6.

Our popular **Before School Running Club** was in full force this year, attracting over 50 fitness enthusiasts including students, staff, and parents.

Summer Carnival – Students from Year 5 and 6 represented the school in the AISA Summer Carnival in Basketball, Cricket, Rugby and Tee-ball. Malvern Springs won the A Division cricket and the A Division Tee-ball.



During Term 2 the school **Cross Country** was held. All students from Year 3 -6 participated. The dedicated staff ensured students were well-prepared for the big day.

Winter Carnival – Our Year 5 & 6 students participated in the Winter Carnival in Term 2 playing AFL, Netball, Modcrosse, and Soccer. Malvern Springs brought home four trophies: A Division netball champions, AFL, Modcrosse and Soccer B division champions. We are very proud that Malvern Springs was the overall winning school.



Faction Athletics Carnival - The Faction Athletics Carnival in Term 3 had students from Year 3-6 showcasing their athletic prowess in long jump, throws, sprints and long-distance races, capped off with team games and relays.

The Interschool Athletics Carnival –

MUSIC

The expansive classroom programs lead by our passionate music teacher Mrs Alison Robeson (Year 1-6) focuses on teaching music through singing, performing, listening and composition. The music room has a variety of tuned and un-tuned percussion instruments, ukulele, and keyboards. The Music Programme is aligned with the requirements of the PP-Year 6 Western Australian Curriculum. The goal is to provide music activities that motivate students to develop their musical skills and knowledge that will benefit them not only as a musician, but in other areas of their lives.

School Band

The Malvern Springs Primary School Concert Band continues to be the largest primary school concert band in the north metropolitan education region. The band participated in the ABODA (Australian Band and Orchestra Directors Association WA) festival held in September 2023 at Churchlands Senior High School. They also performed at the ANZAC service, a whole school music assembly and the end of year concert.

School Choir

The school Choir Program consists of a Junior and Senior choir. Malvern Springs is very inclusive and entry into the choir is open to any child, no audition is necessary. Our choirs contributed to several school and community events held throughout the year. The highlight of the senior choir was our participation in the Massed Choir Festival held at the Perth Concert Hall. The choir performed at our ANZAC assembly, the Year 6 graduation and end of year music concert.



IMSS Program (Instrumental Music Schools Services). An instrumental program is provided through the Instrumental Music School Services (IMSS) with several performance opportunities throughout the year.

VISUAL ARTS

Students explore and reflect on the work of other artists before designing and creating their own works in response to a theme. The art program focuses on student resilience, growth mindset and critical and creative thinking skills.

Artist-in-Residence Projects/Excursions Students across multiple year levels were visited by local West Australian artist ----- where they were taught to create artworks out of recycled materials.

Achievement

NAPLAN 2023 was administered in week 7 of term one. While comparisons between distribution of student scores in Proficiency Levels cannot be made with previous NAPLAN Proficiency Bands, viewing performance in relation to Like Schools suggests closer alignment in distribution in both Years 3 and 5. The tables include the four proficiency levels (Exceeding, Strong, Developing and Needs Additional Support)

Numeracy Yr 3 Proficiency Level	2023 %		Summary
	Malvern Springs	Like Schools	
Exceeding	1	6	<i>Our year 3 students' performance was relatively similar to that of like schools. Malvern Springs has a smaller percentage of students exceeding in Numeracy.</i>
Strong	50	48	
Developing	31	31	
NAS	18	15	

NAPLAN Score Range			
 493<	 492 - 378	 377 - 311	 310 and below

Numeracy Yr 5 Proficiency Level	2023 %		Summary
	Malvern Springs	Like Schools	
Exceeding	4	5	<i>Malvern Springs has a greater percentage of year five students achieving at a strong proficiency level than like schools.</i>
Strong	62	49	
Developing	23	32	
NAS	11	14	

Reading Yr 3 Proficiency Level	2023 %		Summary
	Malvern Springs	Like Schools	
Exceeding	15	8	<i>Our year 3 students performed above those at like schools with a greater percentage achieving at an exceeding and strong level.</i>
Strong	50	46	
Developing	27	29	
NAS	9	17	

Reading Yr 5 Proficiency Level	2023 %		Summary
	Malvern Springs	Like Schools	
Exceeding	17	11	<i>Our year 5 students performed above those at like schools with a greater percentage achieving at an exceeding and strong level.</i>
Strong	62	53	
Developing	14	24	
NAS	7	11	

Grammar and Punctuation Yr 3	2023 %		Summary
	Malvern Springs	Like Schools	
Proficiency Level			<i>Our year 3 students' performance was relatively similar to that of like schools. Adjustments need to be provided to assist students to achieve at a strong proficiency level.</i>
Exceeding	5	4	
Strong	38	35	
Developing	38	38	
NAS	19	22	

Grammar and Punctuation Yr 5	2023 %		Summary
	Malvern Springs	Like Schools	
Proficiency Level			<i>Year 5 students achieved slighter better than students from like schools with a greater percentage of students achieving at an exceeding or strong proficiency level.</i>
Exceeding	11	6	
Strong	54	44	
Developing	24	35	
NAS	10	15	

Writing Yr 3	2023 %		Summary
	Malvern Springs	Like Schools	
Proficiency Level			<i>Malvern Springs is comparable to like schools with a slightly higher percentage of MSPS students achieving at an exceeding level.</i>
Exceeding	9	4	
Strong	64	66	
Developing	16	20	
NAS	11	10	

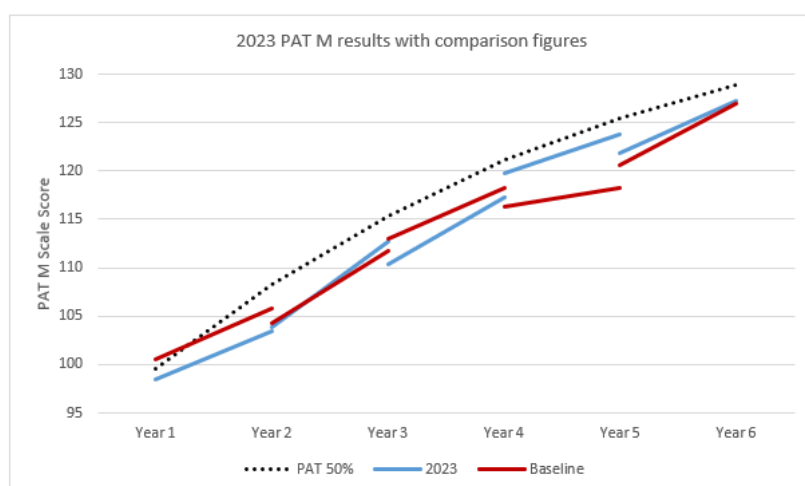
Writing Yr 5	2023 %		Summary
	Malvern Springs	Like Schools	
Proficiency Level			<i>The achievement of Malvern Springs year 5 students was above that of students from like schools at the exceeding and strong proficiency levels.</i>
Exceeding	10	7	
Strong	62	51	
Developing	21	29	
NAS	8	13	

Spelling Yr 3	2023 %		Summary
	Malvern Springs	Like Schools	
Proficiency Level			<i>Year 3 students performance was above that of students from like schools with more than double the percentage of students achieving at an exceeding level. A number of students need additional support.</i>
Exceeding	24	10	
Strong	44	40	
Developing	20	35	
NAS	12	15	

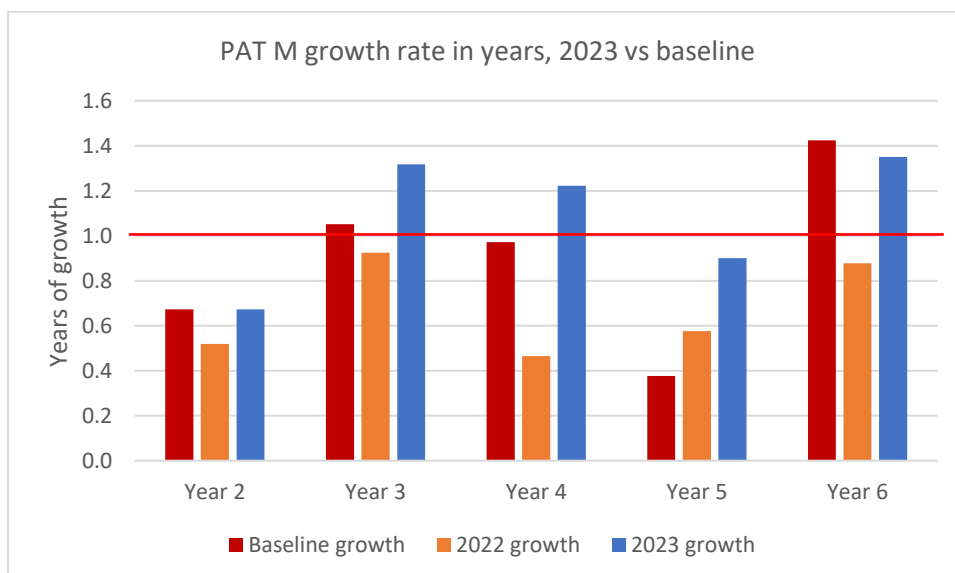
Spelling Yr 5	2023 %		Summary
	Malvern Springs	Like Schools	
Proficiency Level			Year 5 students performance was above that of students from like schools with double the percentage of students achieving at an exceeding level. A small percentage of students need additional support.
Exceeding	31	15	
Strong	55	48	
Developing	9	25	
NAS	5	11	

Mathematics

Compared to our baseline year, the rate of growth in PAT Maths has increased by 23%, and importantly, has increased by 46% on this time in 2022.



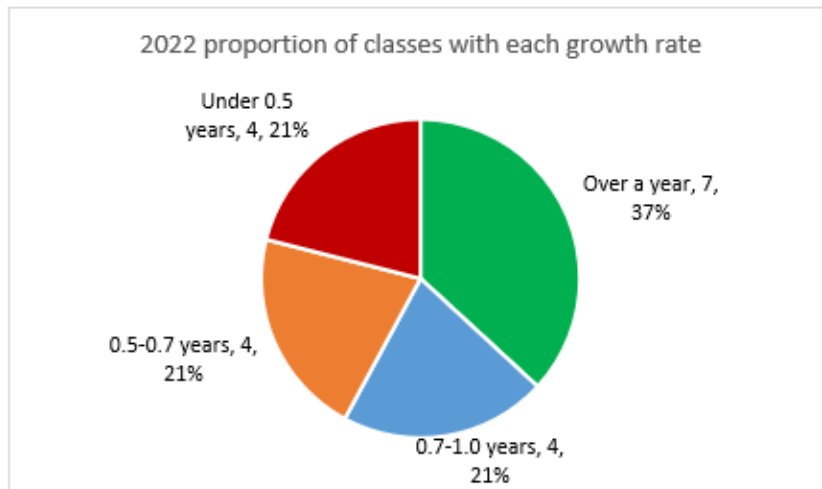
In 2023, years 3, 4 and 5 have achieved their best-ever growth rates. Consistency between classes has also improved significantly, with the proportion of classes making 0.7 years of growth or more doubling in 2023.



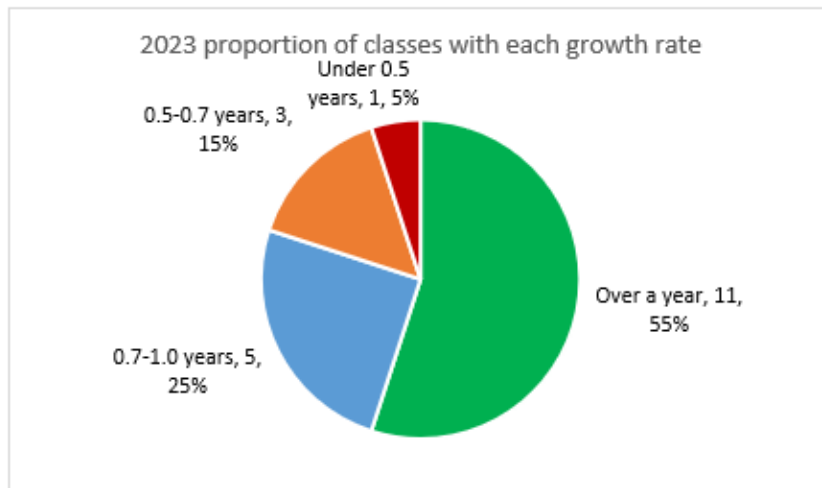
In 2022 we were concerned that growth rates had dropped across the school, that growth between classes was very inconsistent. We were particularly concerned with the growth rates by year 4 classes and year 2 classes.

In order to check growth rates, PAT was also conducted mid-2023 and growth rates were examined for each class to inform teaching. This had a large impact on whole-year growth rates, with marked improvements evident in the 2023 data.

Consistency between classes was a big issue last year. In 2022, just 37% of classes (7 classes) made a full year of growth, with 21% (4 classes) experiencing less than 0.5 years.



By contrast, only one class made under 0.5 years of growth in 2023, and 11 made over a year of growth.



Where to in 2024

The focus in Mathematics for 2024 will be on refining whole school approaches and consolidating staff understanding of our High Impact Instruction Model through instructional coaching and professional learning.

Another area of focus will be to implement a mathematics fluency program.

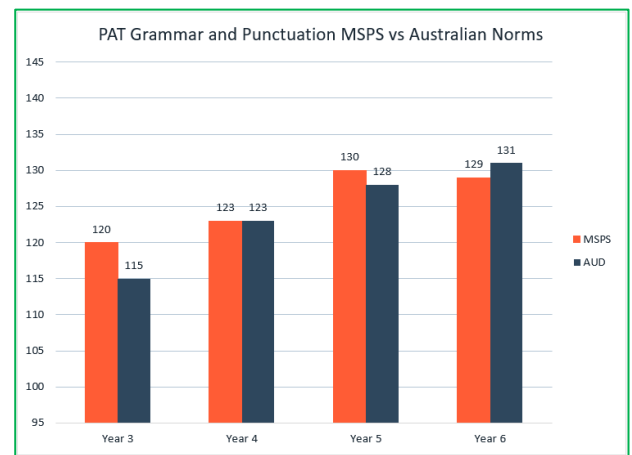
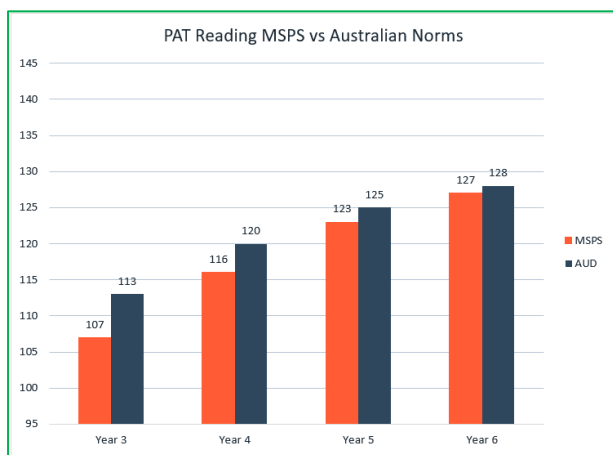
English

Analysis of the On Entry Assessment data in early childhood identified the need for a consistent approach to the explicit teaching of phonemic awareness, phonics and oral language. To support this, a phonemic awareness program called Heggerty was introduced in all Pre-Primary and Year 1 classrooms. This informed the development of an aligned scope and sequence for Kindy. This will

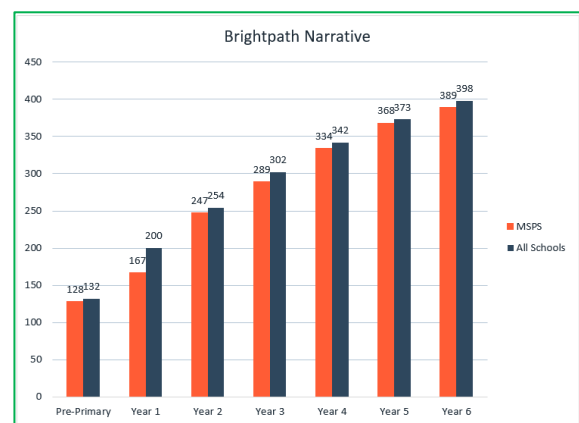
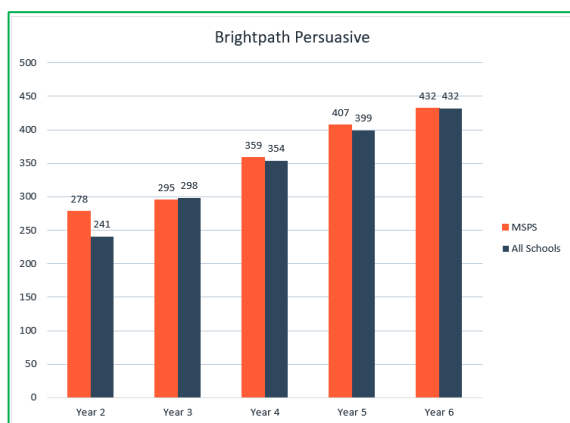
A particular focus will be given to our Colourful Semantics program which the early childhood teachers use to build sentence structures orally and then later transfer into written sentences.

Our Spelling results continue to be the strongest out of all areas tested

Professional development and coaching to support our Talk for Writing program will be continues in 2024.



PAT results this year revealed MSPS students achieving a little lower in reading than the normative data for Australia in all year levels. The results show that we are close to matching or above the normative data for Australia in Grammar and Punctuation. We have continued our very successful Reading Clubs during 2023 in junior and senior years, giving students access to further support in decoding and comprehension skills before school.



We are pleased with the progress our students continue to make in Writing. Brightpath results indicate Malvern Springs students just above or equal to all students.

Where to in 2024

Malvern Springs Primary School will continue to provide an excellent education to our students using evidence-based teaching practices to support the academic and social growth of each individual student. We will continue to provide intervention leading to improved outcomes for each student.

Finance – School Budget Summary

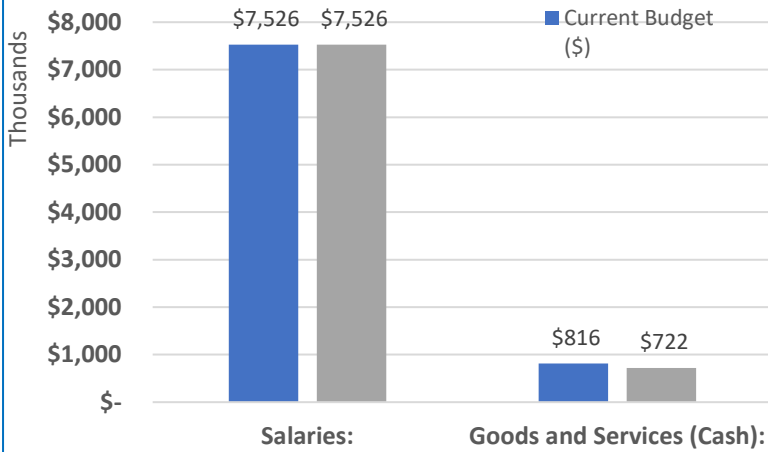
Income

INCOME - Dec 2023 (Verified Dec Cash)		
	Current Budget (\$)	Actual YTD (\$)
Carry Forward (Cash)	285,585	285,585
Carry Forward (Salary)	143,622	143,622
STUDENT-CENTRED FUNDING		
Per Student	6,536,601	6,536,601
School and Student Characteristics	1,261,821	1,261,821
Disability Adjustments	(2,905)	(2,905)
Targeted Initiatives	215,123	215,123
Operational Response Allocation	750	750
Total Funds:	8,011,390	8,011,390
TRANSFERS AND ADJUSTMENTS		
Regional Allocation	3,500	3,500
Transition Adjustment	0	0
School Transfers – Salary	(418,689)	(418,689)
School Transfers - Cash	405,689	405,689
Department Adjustments	0	0
Total Funds:	(9,500)	(9,500)
LOCALLY RAISED FUNDS (REVENUE)		
Voluntary Contributions	15,763	15,763
Charges and Fees	119,072	119,072
Fees from Facilities Hire	70,600	49,260
Fundraising/Donations/Sponsorships	20,751	20,751
Commonwealth Govt Revenues	0	0
Other State Govt/Local Govt Revenues	2,000	2,000
Revenue from CO, Regional Office and Other scho	0	0
Other Revenues	22,134	22,589
Transfer from Reserve or DGR	0	0
Residential Accommodation	0	0
Farm Revenue (Ag and Farm Schools only)	0	0
Camp School Fees (Camp Schools only)	0	0
Total Funds:	250,320	229,435
TOTAL	8,681,417	8,660,532

EXPENDITURE - Dec 2023 (Verified Dec Cash)		
	Current Budget (\$)	Actual YTD (\$)
SALARIES		
Appointed Staff	6,635,907	6,635,907
New Appointments	0	0
Casual Payments	885,011	885,011
Other Salary Expenditure	5,423	5,423
Total Funds:	7,526,341	7,526,341
GOODS AND SERVICES (CASH EXPENDITURE)		
Administration	21,231	23,434
Lease Payments	138,175	112,233
Utilities, Facilities and Maintenance	211,424	217,388
Buildings, Property and Equipment	4,100	4,100
Curriculum and Student Services	360,747	324,492
Professional Development	45,500	21,955
Transfer to Reserve	4,000	0
Other Expenditure	30,491	17,463
Payment to CO, Regional Office and Other schools	535	535
Residential Operations	0	0
Residential Boarding Fees to CO (Ag Colleges only)	0	0
Farm Operations (Ag and Farm Schools only)	0	0
Farm Revenue to CO (Ag and Farm Schools only)	0	0
Camp School Fees to CO (Camp Schools only)	0	0
Total Funds:	816,203	721,600
TOTAL	8,342,544	8,247,941

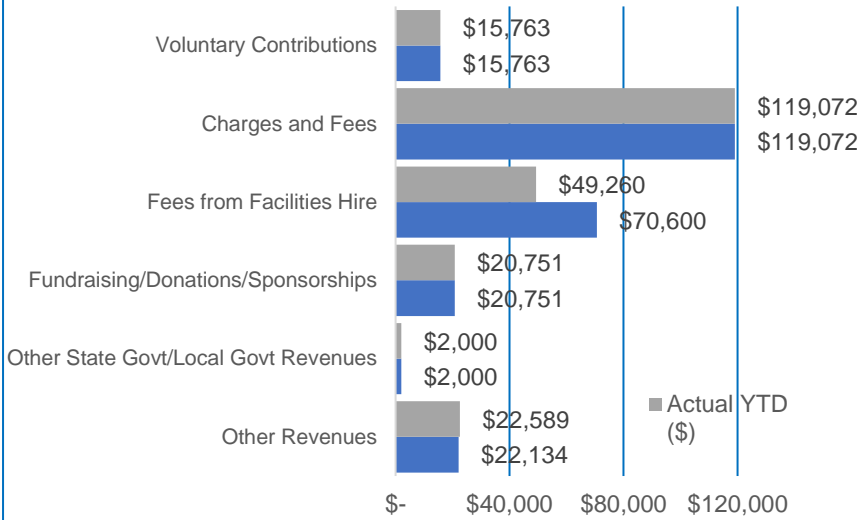
ONE LINE BUDGET - Dec 2023 (Verified Dec Cash)		
	Current Budget (\$)	Actual YTD (\$)
Carry Forward (Cash):	285,585	285,585
Carry Forward (Salary):	143,622	143,622
INCOME		
Student-Centred Funding (including Transfers & Adjustments):	8,001,889	8,001,889
Locally Raised Funds:	250,320	229,435
Total Funds:	8,681,416	8,660,532
EXPENDITURE		
Salaries:	7,526,341	7,526,341
Goods and Services (Cash):	816,203	721,599
Total Expenditure:	8,342,544	8,247,940
VARIANCE:	338,872	412,591

Dec 2023 (Verified Dec Cash)



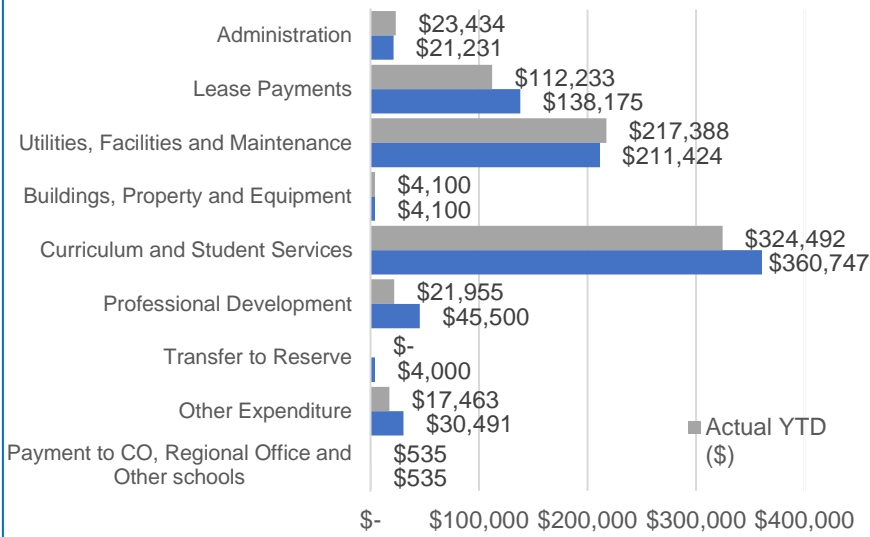
Goods and Services vs Salary Expenditure

Dec 2023 (Verified Dec Cash)



Locally Generated Revenue - Budget vs Actual

Dec 2023 (Verified Dec Cash)



Goods and Services Expenditure – Budget vs Actual

Endorsement The 2023 Annual School Report has been endorsed by the Malvern Springs Primary School Board.

Ian Hutchinson Board Chair

Date: _____

Penny Reynolds Principal

Date: _____

